

- Comprehensive monitoring and control for proactive management
- Embedded in Metrobility's management line cards
- Supports Metrobility's complete line of interface line cards and access line card

Metrobility's WebBeacon Element Management System is a browser-based element and service provisioning software enabled through an embedded kernel which resides on the management card. (See Management Hardware data sheet). WebBeacon provides an efficient, user-friendly way to configure and manage all Metrobility® chassis installed on a single network. The network administrator can use WebBeacon as an alternative to the CLI typically used to configure and operate network devices.

Using WebBeacon, network managers can access individual managed devices remotely, adjust operating parameters quickly and even switch hardware settings from any location at any time. All platform configuration updates, maintenance, and diagnostics can be performed remotely through a web browser. User-enabled traps based on extensive real-time MIB-II and Metrobility-specific MIB statistics – including alarm thresholds and notification procedures – enable early problem identification, fast fault isolation and proactive management to prevent problems before they affect end users.

WebBeacon supports complete remote monitoring and control for all of Metrobility's intelligent line cards when configured in a chassis with a management line card.

**The Metrobility Difference**

Proactive network management from any supported network browser, such as Internet Explorer or Netscape

**Product Highlights**

- System information
- Device configuration
- Module configuration
- Trap configuration
- Chassis monitoring
- Management module monitoring
- Console logs

**Chassis Details**



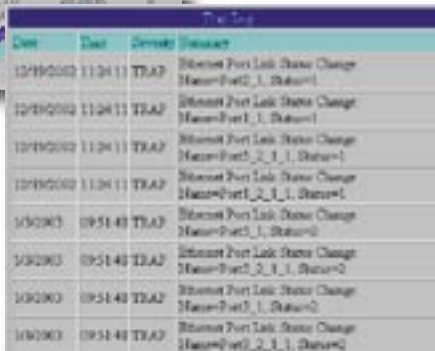
**Module Details**



**Network Statistics**



**Trap Log**



## WebBeacon Features and Statistical Information

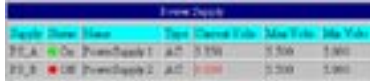
### Chassis Information

Part Number  
Serial Number  
Date of Manufacture  
Revision  
Description



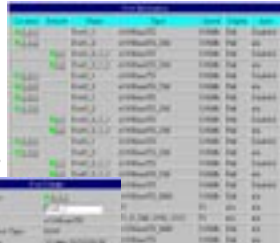
### Chassis Status

Power Status  
Power Output Voltage  
Platform Temperature  
Platform Reset



### Port Information

Name  
Type  
Speed  
Duplex mode  
Auto-negotiation status



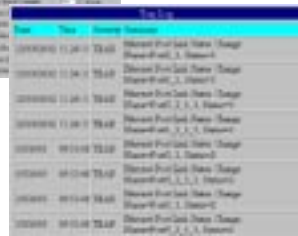
### Port Status

Link status  
Link activity



### Alarms

Cold Start  
Warm Start  
Link Up  
Link Down  
Authentication Failure  
Configuration Change  
Platform Reset  
Line Card Reset  
Port Reset  
Temp Out-of-Range  
Power Supply Out-of-Range  
Optical Power (Access Line Card)  
Power Supply On/Off  
Module/Power Supply Inserted  
Module/Power Supply Removed  
Redundant Switchover  
Far End Fault  
Remote Fault Alarm (Ethernet and TDM)  
Port Speed Change  
Port Link State Change (Ethernet and SONET)



### Interface Line Card Status/Control

Backpressure  
Full Duplex Flow Control  
Diagnostic Status  
Auto-Recovery  
Management  
Image/Memory Information  
Temperature / voltage readings  
Telnet, FTP, HTTP server controls  
Redundancy  
Secondary Switchover  
Active Port  
Auto Revert  
Link Pulse  
Transmission  
Mode Control  
SONAR

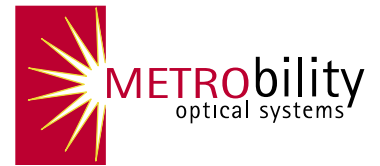


### Access Line Card Status/Control

Packet Types  
Packet Sizes  
Dropped Events  
Error Packets  
Multicast Packet  
Broadcast Packet  
Dynamic Bandwidth Provisioning  
Loopback  
Link Loss Return  
Remote State  
Port State  
Optical Tx-Rx Power  
Link Loss Carry Forward  
Write Protection  
Auto-Negotiation

### Active Control

Network Select/Dynamic Recovery Modes  
Link Loss Carry Forward  
Link Loss Return  
Auto Revert to Primary, Transmit on Both, Link on Both  
SONAR  
Port/Line Card Name  
Chassis Name, Location and Contact Information  
IP Address  
Alarm Threshold Setting  
Reset Platform  
Subnet Mask  
Default Gateway  
Telnet to Console Commands  
Port State  
Auto-Negotiation  
Loopback  
Backpressure,  
Speed  
Duplex



**Metrobility Optical Systems, Inc.**  
25 Manchester Street  
Merrimack, NH USA 03054  
phone 1.603.880.1833  
fax 1.603.594.2887  
www.metrobility.com

**Metrobility Optical Systems is an innovative next generation optical networking company whose focus is on delivering optical access platforms and to harness the power of Ethernet and fiber optics to deliver superior network edge access, connectivity and wavelength multiplexing solutions.**

The information in this publication is accurate as of its publication date; such information is subject to change without notice. Metrobility Optical Systems is not responsible for any inadvertent errors. Metrobility, Metrobility Optical Systems, Lancast, AutoTwister, MicroChassis, "twister," and NetBeacon are registered trademarks, and "redundant twister" and WebBeacon are trademarks of Metrobility Optical Systems. All other trademarks are the property of their respective owners.

Copyright 2003 Revised February 2004  
Metrobility Optical Systems, Inc.  
Printed in U.S.A.

WebBeacon is embedded in Metrobility's Management Line Card

### Order #

### Description

R502-M Management Card  
(One DB-15 and two RJ-45 connectors)

### Hardware requirements

The management card requires one slot in the following Metrobility chassis

R5000-17HS 17-slot chassis, rack-mountable  
R1000-xxx 2-slot chassis, rack-mountable  
R400-02HS-1A 2-slot chassis

R104-11 10/100 TX 4- Port Chassis Stacking Line Card (four RJ-45 connectors)



A6285 ISO 9001

Metrobility Optical Systems, Inc.