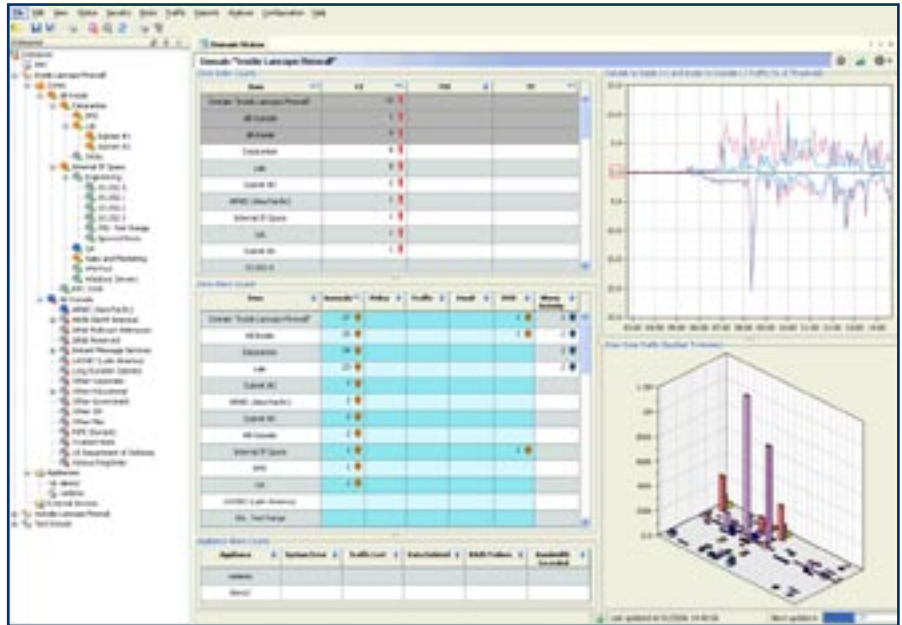


The StealthWatch™ Management Console by Lancope provides critical visibility into enterprise-wide network activity through scalable, centralized management of multiple StealthWatch™ appliances for effective protection and optimization of enterprise networks. By correlating real-time security and network intelligence across StealthWatch appliances deployed at critical segments throughout the network, the StealthWatch Management Console increases network and security team efficiencies and decreases operating costs, while improving the security posture and operational awareness across the network.



*Get a view into system-wide activity for prioritized problem identification & resolution*



*Rapidly detect network anomalies and security threats through advanced visualization*

Featuring Java-based platform independence, the StealthWatch Management Console appliance offers data correlation, traffic visualization and consolidated reporting. Administrators can identify and prioritize security threats, pinpoint network misuse and suboptimal performance and manage incident response across the enterprise— all from a single control center.

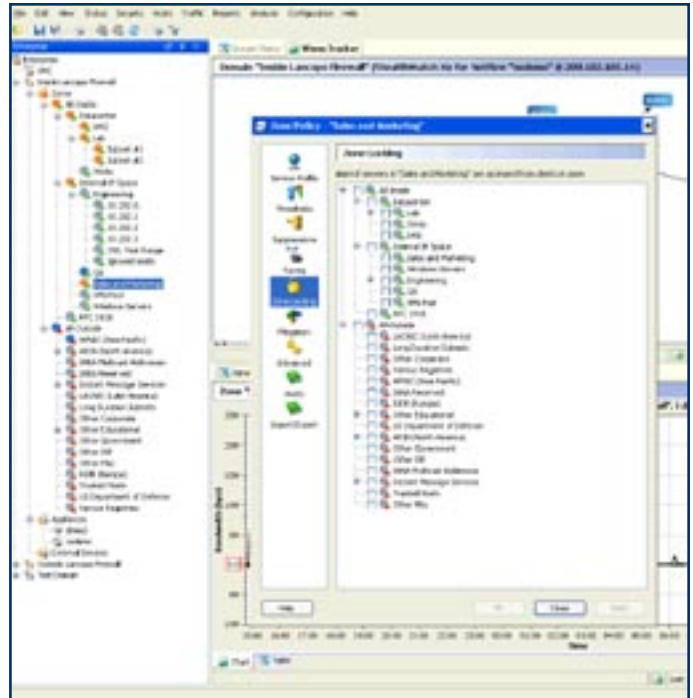
Armed with 3D representations of network traffic, customized summary reports, and integrated security and network intelligence for drill down analysis, administrators can easily identify internal and external attacks, network exposures and policy violations. The StealthWatch Management Console also enhances network management through trend analysis, performance monitoring, service usage and activity tracking, and various packet and protocol usage reports.

### Customizable and flexible 3D visualization of security and network intelligence

With advanced 3D graphics and the ability to customize preferred views of network activity, the StealthWatch Management Console provides unique insight into the security and usage of the network. Graphically displayed network traffic relationships and security intelligence help network and security teams understand traffic patterns and identify deviations from normal network behavior. This visualization aids the detection of Denial of Service (DoS) attacks, worms, reconnaissance and network misuse. Beyond security applications, the StealthWatch Management Console helps administrators identify network bottlenecks, spot malfunctioning network devices and perform capacity planning to optimize network performance.

### Drill-down analysis of security events

The StealthWatch Management Console correlates data across the enterprise for in-depth root-cause analysis and identification of network and security trends. Offering drill-down analysis into alarms, host-level activity and suspicious network behavior, administrators can prioritize and facilitate rapid remediation to contain attacks and mitigate network damage. Its user-friendly GUI allows intuitive navigation through the various layers of information provided by StealthWatch appliances across the network.



*Intuitively manage and administer security zones, policies and devices*



*Easily customized reports deliver insight into trends and expose network misuse*

### Insightful real-time reporting

Through pre-defined XML-based reports that include source/destination IP address, services, time period, traffic protocol and bandwidth levels, the StealthWatch Management Console provides valuable insight into network usage. Administrators can use this knowledge to perform essential security and network management tasks, such as creating and assessing security policies; ensuring proper configuration of firewalls, servers and other network devices; and identifying trends in order to anticipate and remedy potential problems.

### Efficient centralized administration across distributed deployment

Offering secure and easy-to-use remote administration of multiple StealthWatch appliances regardless of physical location, the StealthWatch Management Console allows administrators to

centrally define and implement hierarchical security zones, security and network usage policies and various appliance configuration parameters. In addition, the predictable, low-bandwidth transmission between StealthWatch sensors and the management console further enables cost-effective and efficient management of security and network across the global enterprise.