

Organizations worldwide are reporting an increasing number of network security incidents, which cost on average \$2 million and 22 hours of downtime. Lancope's StealthWatch System delivers the advanced capabilities that enterprises need to prevent incidents as well as reduce the duration and impact of inevitable events.

As a key new component of the StealthWatch System, the StealthWatch Xe for sFlow appliance collects and analyzes sFlow data from existing network infrastructure devices. This integration enables organizations to cost-effectively and seamlessly extend key StealthWatch capabilities across the distributed enterprise. With this expanded network coverage, organizations are more prepared than ever to defeat worms, internal misuse and other anomalies that significantly impact the availability and integrity of mission-critical networks, applications and data.

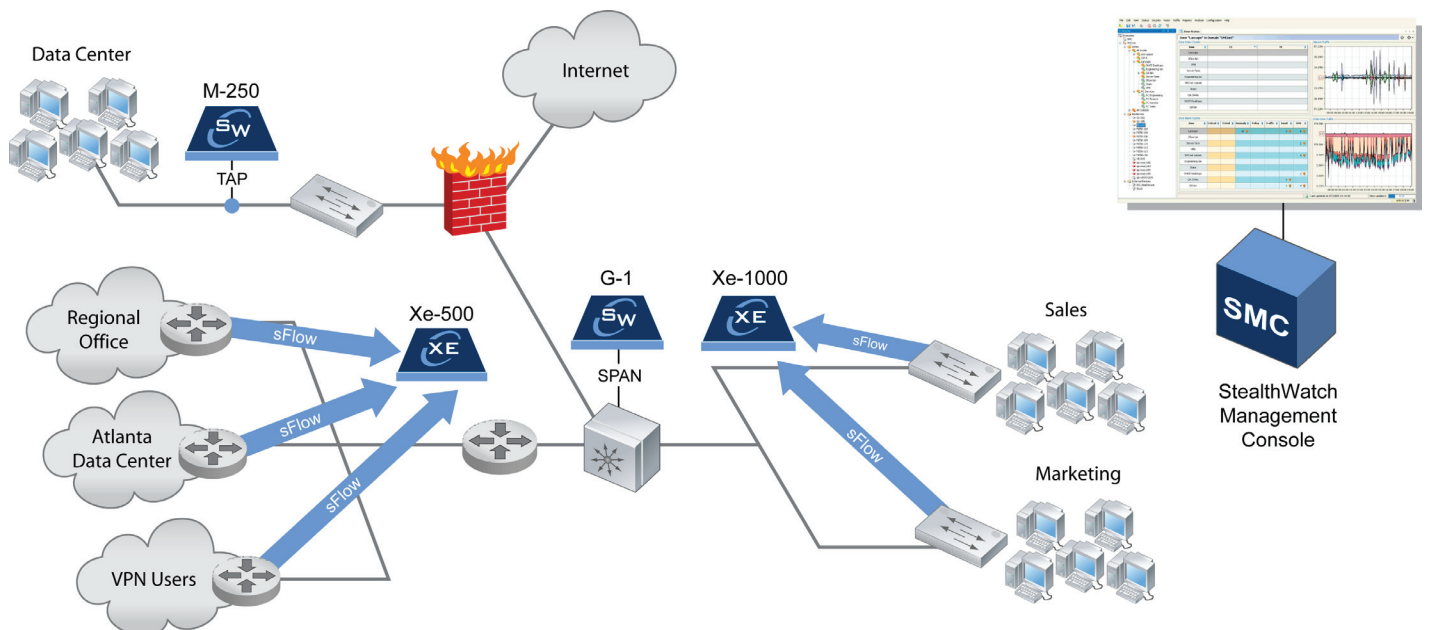
With StealthWatch Xe for sFlow, organizations can now fully realize the enterprise security benefits of centrally collecting and analyzing industry-standard sFlow data, which is natively available in existing network infrastructure from Foundry Networks, HP, Extreme Networks and other leading vendors. StealthWatch Xe for sFlow enables enterprises to gain broader, continuous awareness of what is happening across the network versus what should be happening. StealthWatch Xe for sFlow significantly improves and extends network protection by overcoming previous constraints,

including physical proximity requirements and limited mirror ports, staff, or budget.

Strategic deployment across the enterprise of the StealthWatch System, which includes the StealthWatch NC (native packet capture), StealthWatch Xe for sFlow, StealthWatch Xe for NetFlow and StealthWatch Management Console appliances, provides unmatched security intelligence at host and network-levels to preempt, find and fix critical threats faster.

KEY BENEFITS:

- Cost-effectively extend enterprise protection to distributed and MultiGig network environments
- Fully realize the security potential of sFlow data with the industry's leading flow-based anomaly detection engine
- Consistent user-experience and seamless integration across StealthWatch system to expedite risk and incident management



StealthWatch Xe Product Family

Model	Recommended Deployment	Max. # of Sources*	Hardware Redundancy
StealthWatch Xe500	small, low volume environments	10,000 ports or 200 devices	none
StealthWatch Xe1000	mid-range, medium volume environments	25,000 ports or 500 devices	redundant power and storage
StealthWatch Xe2000	high end, high volume sFlow sources	50,000 ports or 1000 devices	redundant power and storage

* Supported sFlow enabled devices include (but are not limited to): Foundry Networks, Extreme Networks and HP Procurve.

StealthWatch Xe for sFlow Feature Comparison

Capabilities	StealthWatch NC™	StealthWatch Xe™
"Zero-day" Worm Defense	●	●
Adaptable Mitigation (IPS)	●	●
DoS/DDoS Defense	●	●
Scan and Reconnaissance Detection	●	●
P2P File Sharing Detection	●	●
Traffic Analysis and Alarming	●	●
Incident Investigation	●	●
Advanced Flow Visualization	●	●
Automatic Baselining and Tuning	●	●
Support for MultiGig Networks	◐	●
Support for Remote Flow Monitoring	○	●
Concern Index	●	●
Host Profiling and Alarming	●	◐
Application Verification	●	○
OS Fingerprinting	●	●
Layer-7 Anomaly Detection	●	○
Packet Capture	●	○

Full Support: ●

Partial Support: ◐

Not Supported: ○

About Lancope®

Lancope is the leading provider of network behavior analysis and response solutions that defeat zero-day worms, internal network misuse and other anomalies that compromise network integrity. Lancope's StealthWatch System integrates security and network management technology to reduce network risks and maximize network availability by rapidly identifying, prioritizing, mitigating and resolving critical threats, whether new or well-known. Both OPSEC and Common Criteria-certified, StealthWatch was named an InfoWorld 2005 Technology of the Year. Defending the networks of Global 2000 organizations, academic institutions and government entities, StealthWatch protects over 175 enterprise customers and 15 million hosts worldwide. Lancope's Technology Alliance Partners include Cisco Systems, Foundry Networks, ArcSight, Micromuse, LURHQ and CheckPoint. Lancope is a privately held, venture-backed company headquartered in Atlanta, Georgia.