



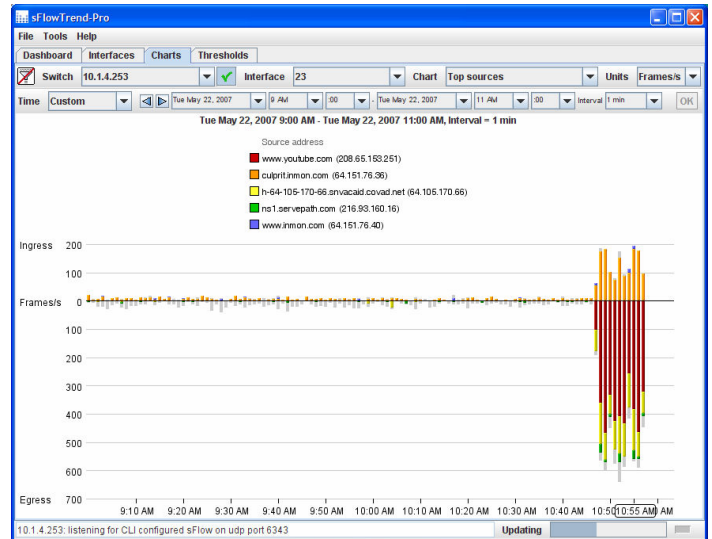
# sFlowTrend-Pro

## Introduction

Reliable and efficient integrated network services are essential for today's organisations to function properly. These organisations rely on the network infrastructure to provide applications (such as payroll, email, web, Citrix solutions, ERP, CRM, VoIP etc.) and to provide secure exchange of confidential information. As a consequence, changes in the behaviour and usage of the network will impact productivity, resulting in negative financial consequences and sometimes creating legal liabilities. Even organisations with small networks are exposed to this risk, since just a small number of users or applications can cause significant disruption. As such, maintaining continuous visibility of the behaviour and usage of the complete network and rapidly identifying emerging issues is critical for organisations of all sizes.

sFlowTrend-Pro is a new application, available from the experts in network traffic analysis software, InMon Corp., tailored to the needs of small and medium sized networks. It continuously monitors all switches and routers in the network using industry standard sFlow® technology, summarising network health, highlighting issues and anomalous behaviour, and providing intuitive drill down for rapid identification of the root cause of any problem. sFlow is included at no additional cost in most network switches, so you probably have all the embedded instrumentation you need to start monitoring your network traffic.

sFlowTrend-Pro is designed to be easy to install and use, and because it is written in Java, will run on most platforms.



## Features

- Dashboard provides overall view of network health and highlights issues.
- Intuitive drilldown to pinpoint the cause of congestion, broadcasts and other problems.
- Real-time reporting on network usage by end hosts.
- Identification of top protocols and applications in use on your network.
- Identification of security issues in the network, such as hosts showing scanning behaviour.
- Historical trending of utilisation and network usage. One week of historical data is available by default.
- Configurable thresholds allow easy monitoring of key switches or interfaces, and deviations from baseline.
- Automatic root cause analysis identifies the traffic that caused a threshold to trip, allowing immediate remediation.
- Support for industry standard sFlow - see [sflow.org](http://sflow.org) for a list of switch vendors supporting sFlow.
- Easy switch configuration using SNMP.

## Benefits

- Quickly understand who is using the most bandwidth on your network, and what they are doing.
- Enforce corporate acceptable network use policies.
- Easily determine whether the network is healthy.
- Rapidly identify the cause of any problems or deviation from baseline with thresholds and intuitive drilldown.
- Understand trends in usage and accurately target upgrades.

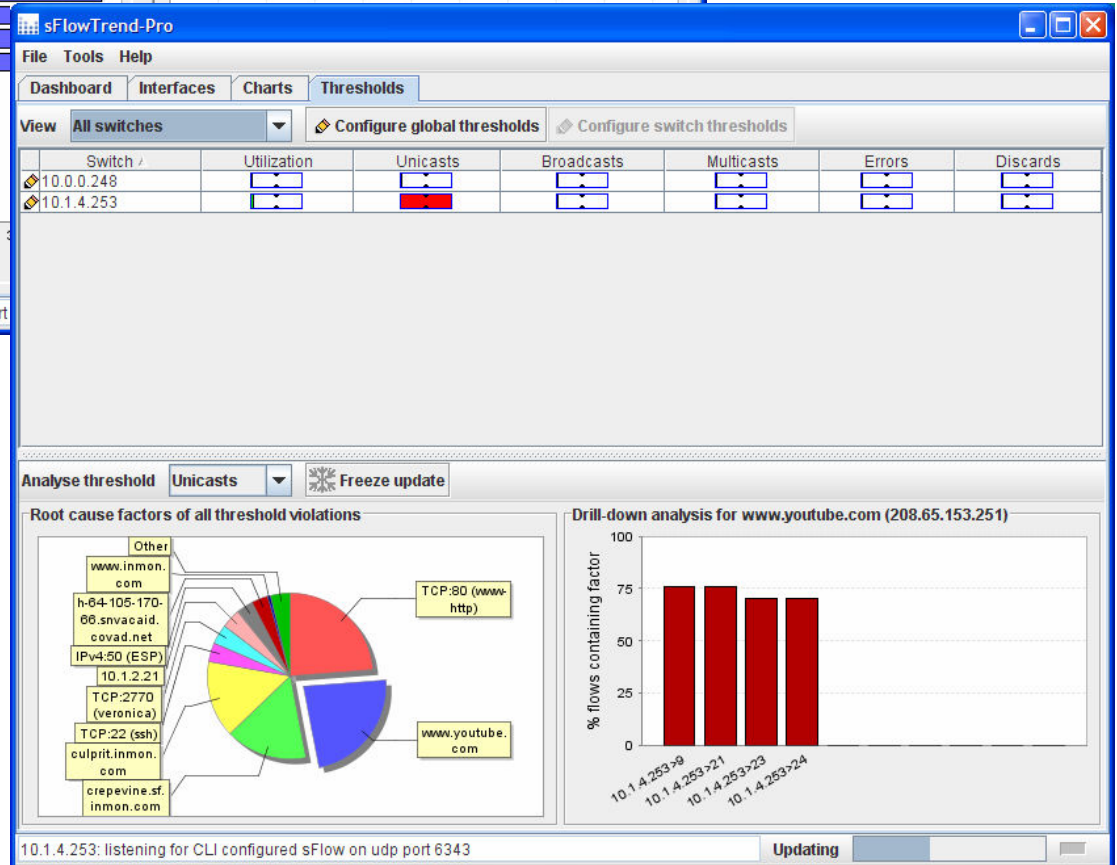
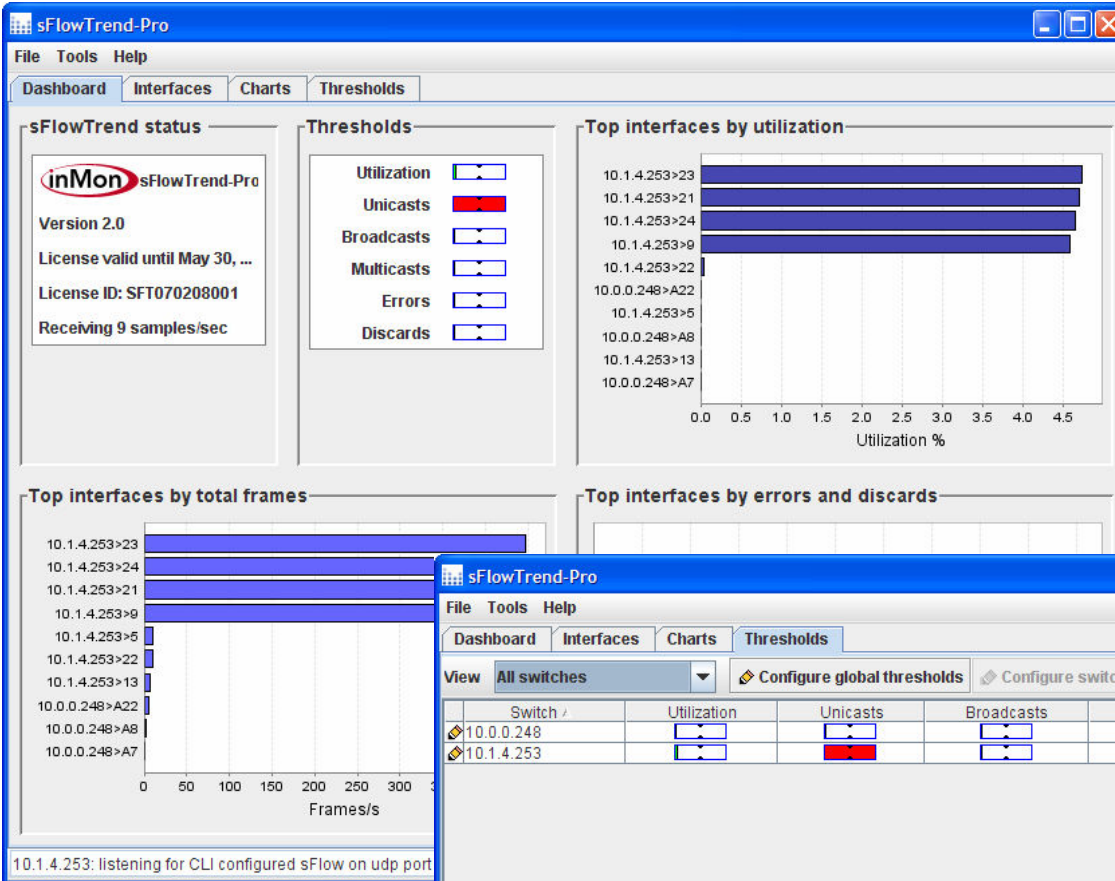
- Simple to install and use, so you can focus on the network, not the monitoring software.

## Using sFlowTrend-Pro

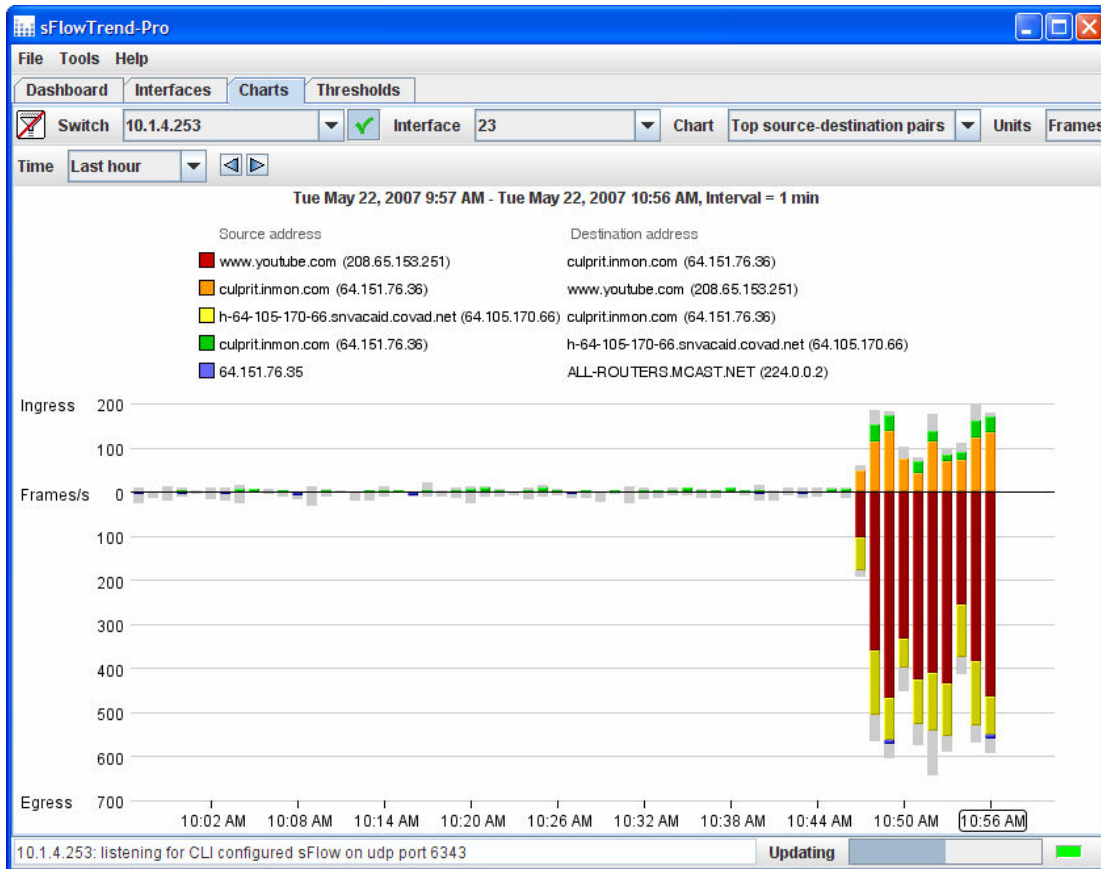
sFlowTrend-Pro is designed to help you quickly find and diagnose network problems, and to be easy to use. Start at the dashboard, which gives a summary of the network interfaces which are most utilised or are experiencing the highest errors, and the overall status of thresholds.

Click to drill down on the red Unicasts threshold, to find out the root cause.

sFlowTrend-Pro immediately shows which switches are violating thresholds and deviating from the baseline. Additionally, the full visibility that sFlow provides allows sFlowTrend-Pro to analyse the causes of the threshold



violation. The unique root cause analysis automatically finds the most significant network traffic causing the threshold violation, and identifies the switch interfaces the traffic is flowing over. From here, the traffic carried by a specific switch or interface can be viewed, to help determine if the traffic is normal, or if it is caused by a problem or network misuse. The traffic charts allow the history of traffic on an interface to be viewed (up to one week is retained by default), and to quickly determine if further action is required.



sFlowTrend-Pro supports analysis of various aspects of network traffic, including top sources and destinations, top connections, VLANs being used, and multicast and broadcast sources. Security oriented analysis is also possible, for example, finding hosts which are exhibiting scanning or denial of service attack type behaviour.

## Availability

sFlowTrend-Pro is available from [www.myinmon.com](http://www.myinmon.com). A full-featured 30 day evaluation license is available. Licenses can be purchased in two forms:

- An annual license, which will be valid for one year, and must be renewed for the software to continue functioning thereafter. Web-based support is included for the year.
- An indefinite license, which does not expire, and includes web-based support.

Please see [www.myinmon.com](http://www.myinmon.com) for pricing information.

## Technical specifications

Specifications:

- Monitoring protocols supported: sFlow and SNMP for switch information.
- Number of switches monitored: 10s of switches.
- History retention: 1 week by default, but customisable.
- Reports: top traffic flow charts, counter-based traffic charts, security analysis, VLAN, broadcast and multicast reports.
- Flexible filtering on all data retained.
- Thresholds on utilisation, unicasts, broadcasts, multicasts, errors and discards, per interface, per switch or overall network.

sFlowTrend-Pro is a Java based application. It runs on any system that meets the minimum requirements, and supports Java 5.0 or later, and Java Web Start (eg Sun Java 5.0 or later).

Minimum configuration:

- CPU: 2GHz Pentium-based processor or equivalent.
- Memory: 500MB.
- Disk: 5GB free disk space.

The specifications for a specific installation are highly dependant on the number of switches monitored, the amount of traffic in the network being monitored, and how long history is kept for.

## Other InMon solutions

InMon offers three solutions to manage the traffic on your network:

- sFlowTrend—a free Java application which will monitor one switch at a time, and give you visibility to the traffic flowing through that switch.
- sFlowTrend-Pro—monitors tens of switches simultaneously, and saves the traffic data to a database, so that longer-term trends can be viewed.
- Traffic Sentinel—an enterprise class, client-server traffic management solution, which provides sophisticated traffic and security analysis, allows very flexible queries and supports custom integration. Traffic Sentinel support sFlow, NetFlow, J-Flow and IPFIX.

## For further information

For further information on sFlowTrend-Pro, please see [www.sflowtrend-pro.com](http://www.sflowtrend-pro.com), or request an evaluation from [www.myinmon.com](http://www.myinmon.com).

InMon Corporation

580 California Street  
Fifth Floor  
San Francisco, CA 94104

[sales@inmon.com](mailto:sales@inmon.com)

Tel: +1 (415) 283-3260

Fax: +1 (415) 283-3360